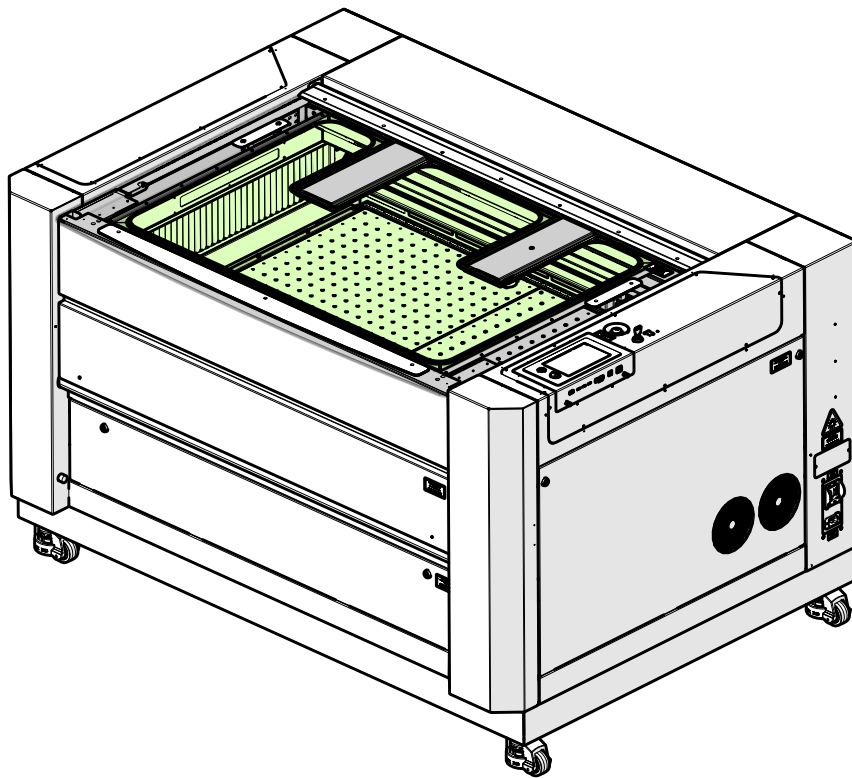


X-Axis Drive Board Replacement Fusion Pro 32 & 48



Parts Required

- TE0104 - X-axis drive board

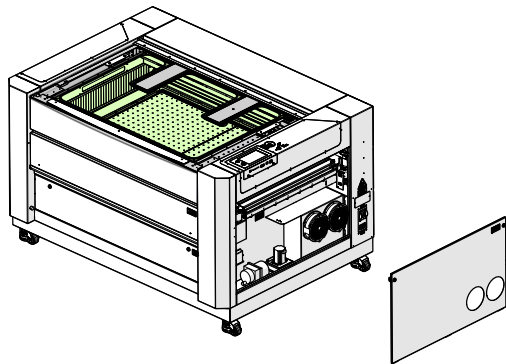
Tools Required

- Phillips head screwdriver
- Anti-static strap

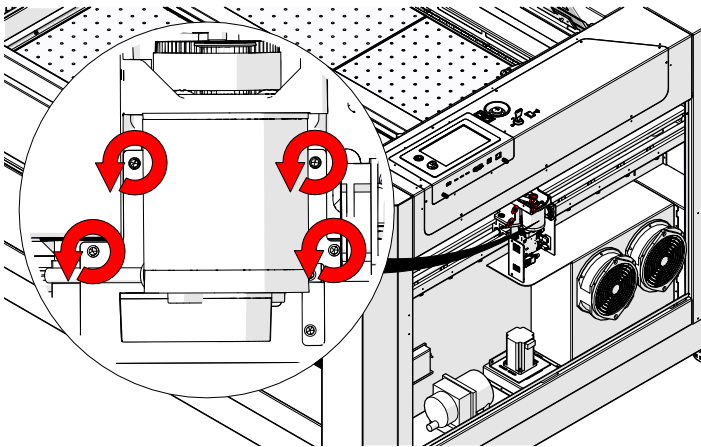
PRO 32 & 48 X-AXIS DRIVE BOARD

X-Axis Drive Board Removal

1. Turn off the engraver.
2. Disconnect engraver from power source.
3. Remove the right panel of the engraver:

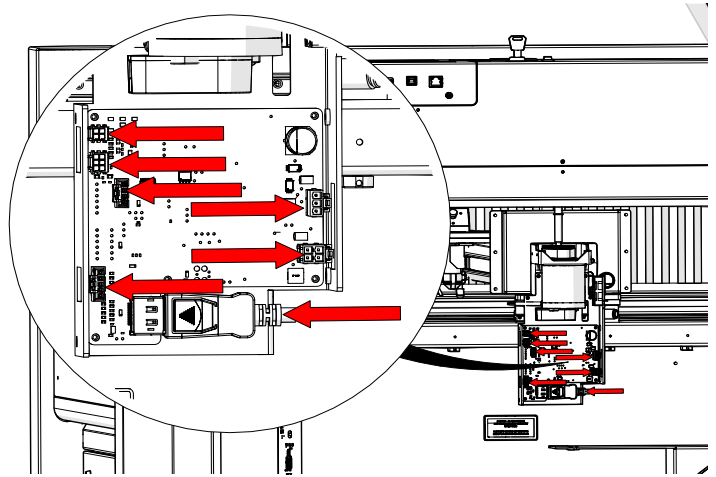


4. Loosen, but do not remove the four (4) Phillips screws that hold the x-axis drive board cover:

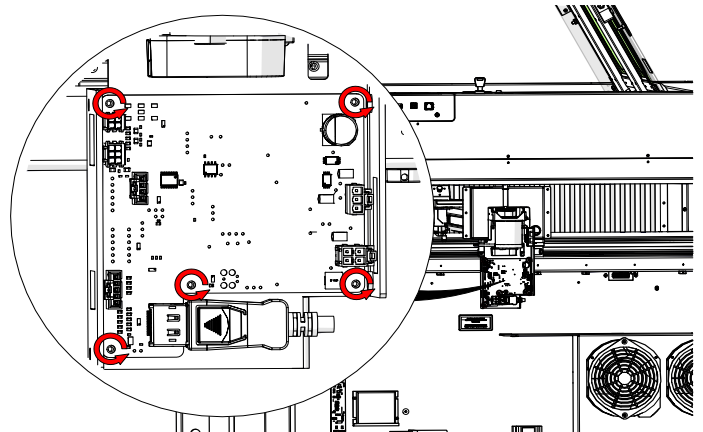


5. Remove the x-axis drive board cover.

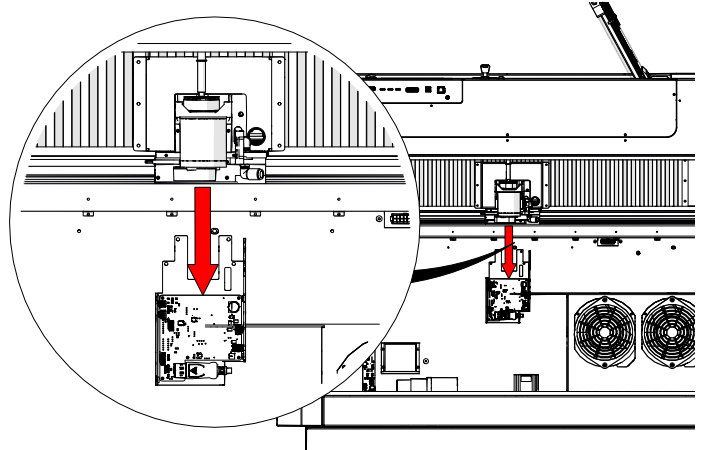
6. Remove the seven (7) electrical connections on the x-axis drive board:



7. Remove the five (5) screws that secure the drive board to the housing:



8. Remove the x-axis motor drive board from the housing.



PRO 32 & 48 X-AXIS DRIVE BOARD

X-Axis Drive Board Installation

1. Remove the anti-static strap from packaging.
2. Place the strap around your wrist and adjust the strap to be tight, but comfortable.
3. After sizing the strap, ensure that the adjustment clamp is in the closed position.

Clamp Closed



Clamp Open



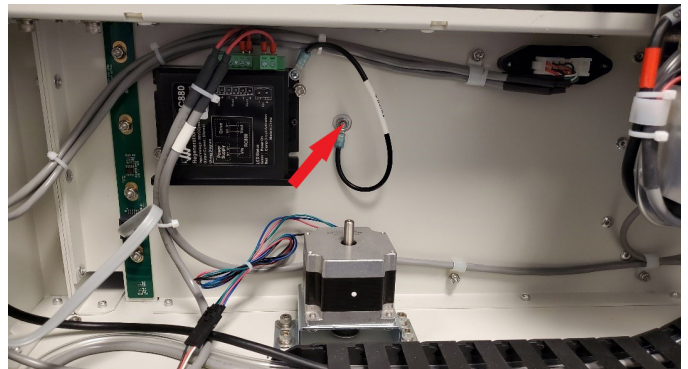
There is a small metal plate on the inside of the anti-static strap. Ensure that this metal plate is in contact with your skin.

The image below shows the correct way to wear the anti-static strap:



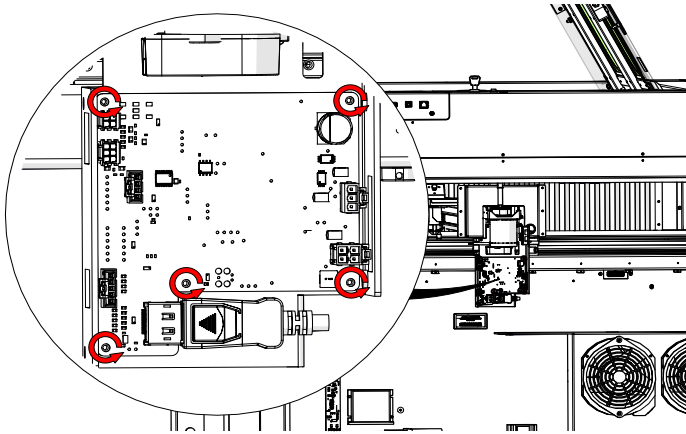
4. Once the strap is secured to your wrist, attach the alligator clip to a bare metal surface in the engraver. Common locations include screw through holes, engraver side panel tabs, or the chassis.

The preferred location to attach the alligator clip is the chassis bolt that connects to the ground from the regenerative clamp, located behind the right panel of the engraver:

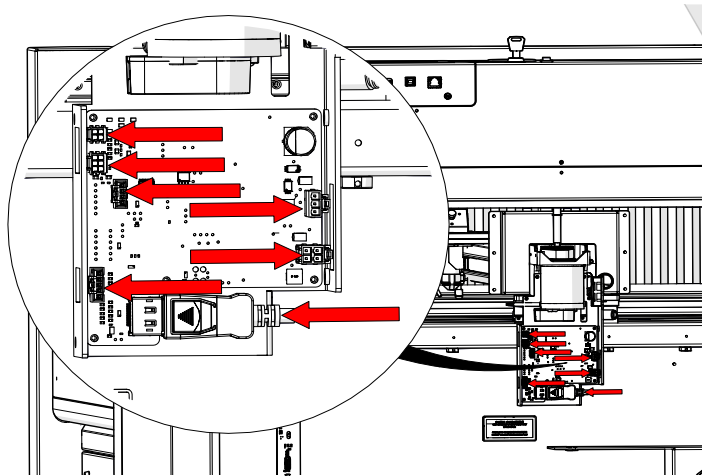


PRO 32 & 48 X-AXIS DRIVE BOARD

5. Position the replacement drive board in the housing and install the five (5) Phillips screws that secure it to the housing:



6. Connect the seven (7) electrical connections on the x-axis drive board:



The electrical connectors on the drive board are all unique and will only fit into one receptacle.

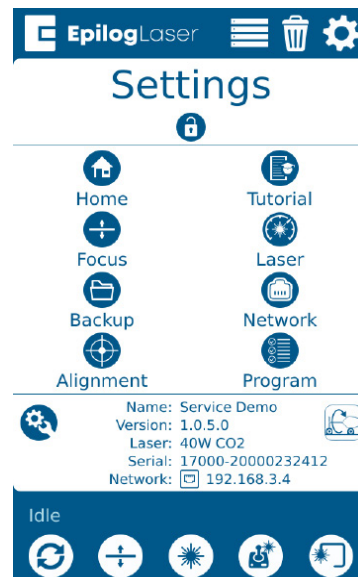
7. Replace the drive board housing cover and tighten the four (4) Phillips screws.
8. Replace the right panel of the engraver.
9. Turn on the engraver and let it complete the startup process.

Programming the X-Axis Drive Board

1. At the display panel, press the gear icon in the upper right-hand corner of the display to open the Settings menu:

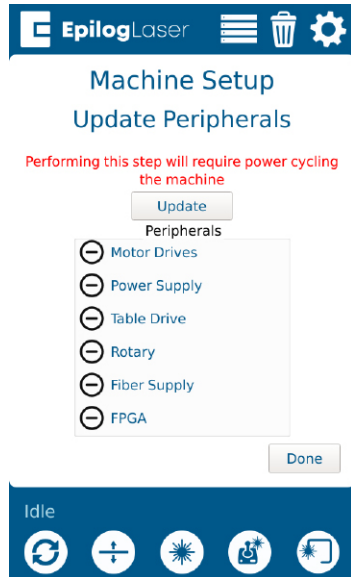


2. Press Program to enter the Peripheral Update menu:



PRO 32 & 48 X-AXIS DRIVE BOARD

3. Once in the Peripheral Update menu, select Motor Drives and press Update:



4. Allow the engraver to run the update process.

When running a peripheral update, do not power off the engraver. During a peripheral update it is common for the display to power off. Once the update has been applied, the engraver will prompt to restart.

5. Once the engraver prompts you to restart, power cycle the engraver.

If further assistance is required, please contact Epilog Laser Technical Support by email at tech@epiloglaser.com, or by phone at 303-215-9171.